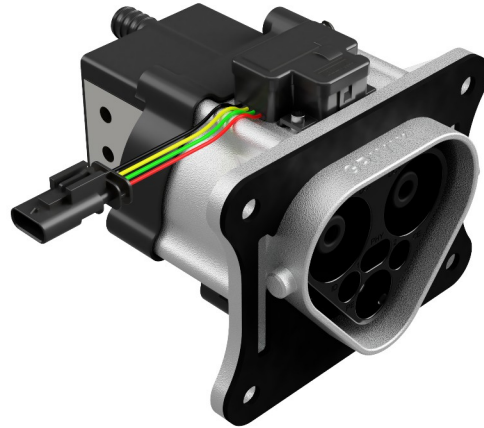


Ruggedized MCS Inlet 3'000 A

Application: MCS Couplers for Electric Vehicles

The Grivix 3'000A Inlet facilitates direct current (DC) charging at 3,000 amperes (max. 4.5 Megawatt) with a regular water-glycol coolant. The coolant never touches any conductive parts. Compatible with MCS vehicle charging connectors (EVSE), for installation in electric vehicles (EV). It requires a connection via copper bars to accommodate these high currents effectively. The coolant connects through 16 mm hoses.



Benefits

- Capable of high currents with a water-glycol coolant.
- Adaptable for small series.
- Increased IP rating
- Ready for harsh environments.

Product Definition

Product Type	MCS Inlet
Standards	IEC 63379, CharIn Ruggedized MCS Whitepaper
Ingress Protection	IP66 (mated), IP20 (unmated)
Conformance	CE, RoHS compliant

Electrical Data

Operational voltage	1'500 V
DC Power Surface Area (10 µm silver plated)	2'345 mm ²
Locking (max 3 e-locks)	24 V (12 V possible) TE Connectivity 1-1564560-1
Signal connection	Amphenol ATM8PS-CKIT

Mechanical Data

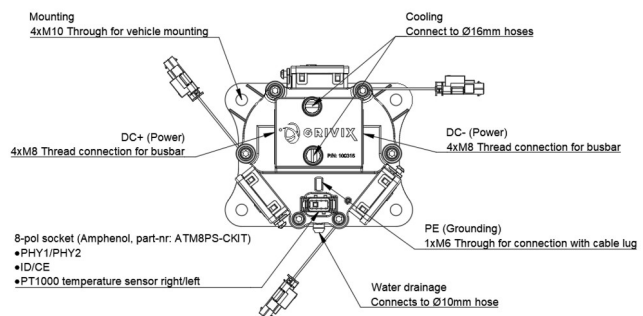
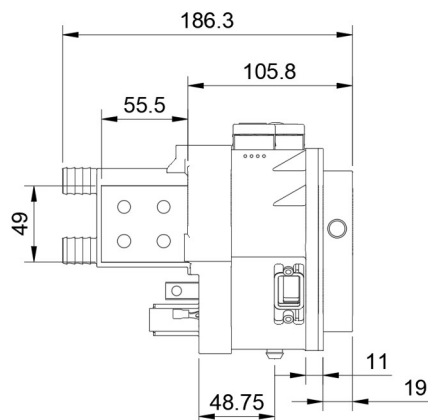
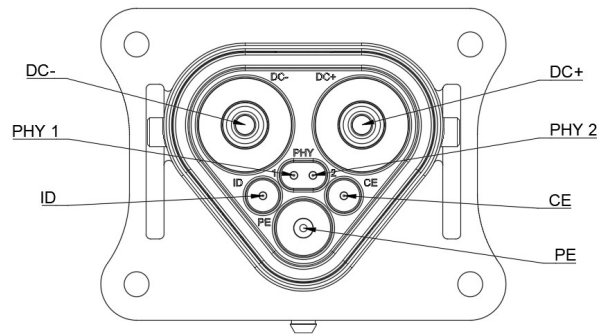
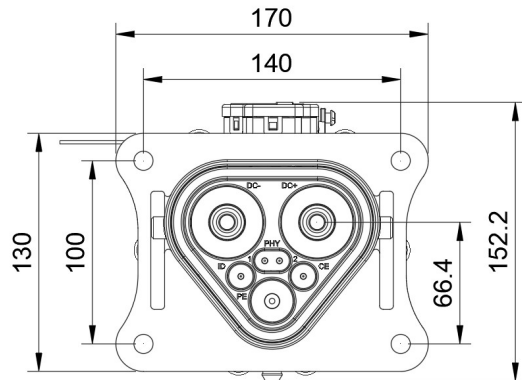
Size [WHD]	170 x 152 x 186 mm
Material	PA 12 / PUR / Copper / Aluminium
Weight	4.2 kg
Coolant hose connection	16 mm

Environmental Data

Operating temperature range	-35 °C to +50 °C
Maximum temperature	110 °C

Product Range

Description	Rated Current [A]	Coolant	Size [WHD]	Weight [kg]
Ruggedized MCS Inlet 2'000 A	2'000 A	Passive	170 x 152 x 164 mm	4.2 kg
Ruggedized MCS Inlet 3'000 A	3'000 A	Water-glycol	170 x 152 x 186 mm	4.2 kg
Ruggedized MCS Inlet 4'000 A	4'000 A	Water-glycol	170 x 226 x 202 mm	5.9 kg



Mounting Instructions for Busbar

- 4x M8 ISO 4762/DIN 912 (Torque 35NM) with
- 4x Tension disk ISO 10670/DIN 6796

It is exclusively in written agreements that we provide our customers with warrants and representations as to the technical specifications and/or the fitness for any particular purpose. The facts and figures contained herein are carefully compiled to the best of our knowledge, but they are intended for general information purposes only.

DO NOT COPY WITHOUT WRITTEN APPROVAL